




FIRST CHOICE IN EV CHARGING


**YOUR ONE STOP
SHOP FOR
COMMERCIAL GRADE
EV CHARGING**




**SMART COMMERCIAL GRADE EV
CHARGING STATIONS,
SOFTWARE & SERVICE FOR
EVERY TYPE OF BUSINESS**

CALL US FOR MORE INFO

 **888-230-2421**

 sales@JuiceBarCharger.com

 www.JuiceBarCharger.com

Reimagine EV Charging

JuiceBar®

FIRST CHOICE IN EV CHARGING



Benefits of EV Charging For Your Business



**ATTRACT & RETAIN TOP
EMPLOYEES, TENANTS
AND CUSTOMERS**



**FUTUREPROOF
YOUR BUILDING**



**EARN LEED POINTS AND
GET GREEN BUILDING
CERTIFICATIONS.**



**OPTIMIZE FUELING
COSTS AND REDUCE
MAINTENANCE COSTS**



**DEMONSTRATE CORPORATE
ENVIRONMENTAL AND
SUSTAINABILITY LEADERSHIP**



**INCREASE VISITORSHIP
AND GENERATE NEW
REVENUE**



**ENHANCE YOUR
COMPANY BRAND IMAGE
& STAND OUT FROM THE
COMPETITION**



**MEET EMERGING STATE
AND CITY EV
REGULATIONS.**

CALL US FOR MORE INFO



888-230-2421



sales@JuiceBarCharger.com



www.JuiceBarCharger.com

Station Comparison



FIRST CHOICE IN EV CHARGING



Features	32 Amp	40 Amp	48 Amp	80 Amp
Port	Single/Double	Single/Double	Single/Double	Single
Required Breaker Size	40A per port	50A per port	60A per port	100A per port
Charging Speed @ 240V	30 miles per hr	38 miles per hour	45 miles per hour	76 miles per hour
Cord Length	18 ft	18 ft	18 ft	9 ft
Retractor	Mount Standard	Mount Standard	Mount Standard	N/A
Energy Star	Y	Y	Y	N
Warranty	1 Year Standard (3 & 5 Extended Available)	1 Year Standard (3 & 5 Extended Available)	1 Year Standard (3 & 5 Extended Available)	1 Year Standard (3 & 5 Extended Available)
Innovative Cable Management	Y	Y	Y	Y
Connector Type	Universal, J1772	Universal, J1772	Universal, J1772	Universal, J1772
OCPP Network Compliant	Y	Y	Y	Y
Communications	Ethernet or Cell	Ethernet or Cell	Ethernet or Cell	Ethernet or Cell
Mounting Options	Pedestal or Wall Bracket	Pedestal or Wall Bracket	Pedestal or Wall Bracket	Pedestal or Wall Bracket
Site Host Support	Y	Y	Y	Y

CALL US FOR MORE INFO



888-230-2421



sales@JuiceBarCharger.com



www.JuiceBarCharger.com

How We Stack Up



FIRST CHOICE IN EV CHARGING

Features	JuiceBar Gen3	Chargepoint CT4000	SemmaConnect Series 6	Blink IQ200
AMPS	32,40,48,80	16,24,30	32	12-80
kW	6.6-19.2	3.8, 5.8, 7.2	6.6, 7.2	6.6-19.2
Open Network	Y	N	N	N
Branding Options	Full and Co-Branding Options Available	C-Branding Only	N	Pedestal Only
Dual Safety Relays	Y	N	N	N
Cable Retractor	Standard	Optional Extra Charge	Optional Extra Charge	Optional Extra Charge
Warranty	1 Year Standard (3 & 5 Year Extended Plans Available)	1 Year	1 Year	1 Year
Made & Assembled in U.S.A	Y	N	N	N
Energy Star Rated	Y	Y	Y	Y
Shipping Time	In as little as 4 weeks			

CALL US FOR MORE INFO



888-230-2421

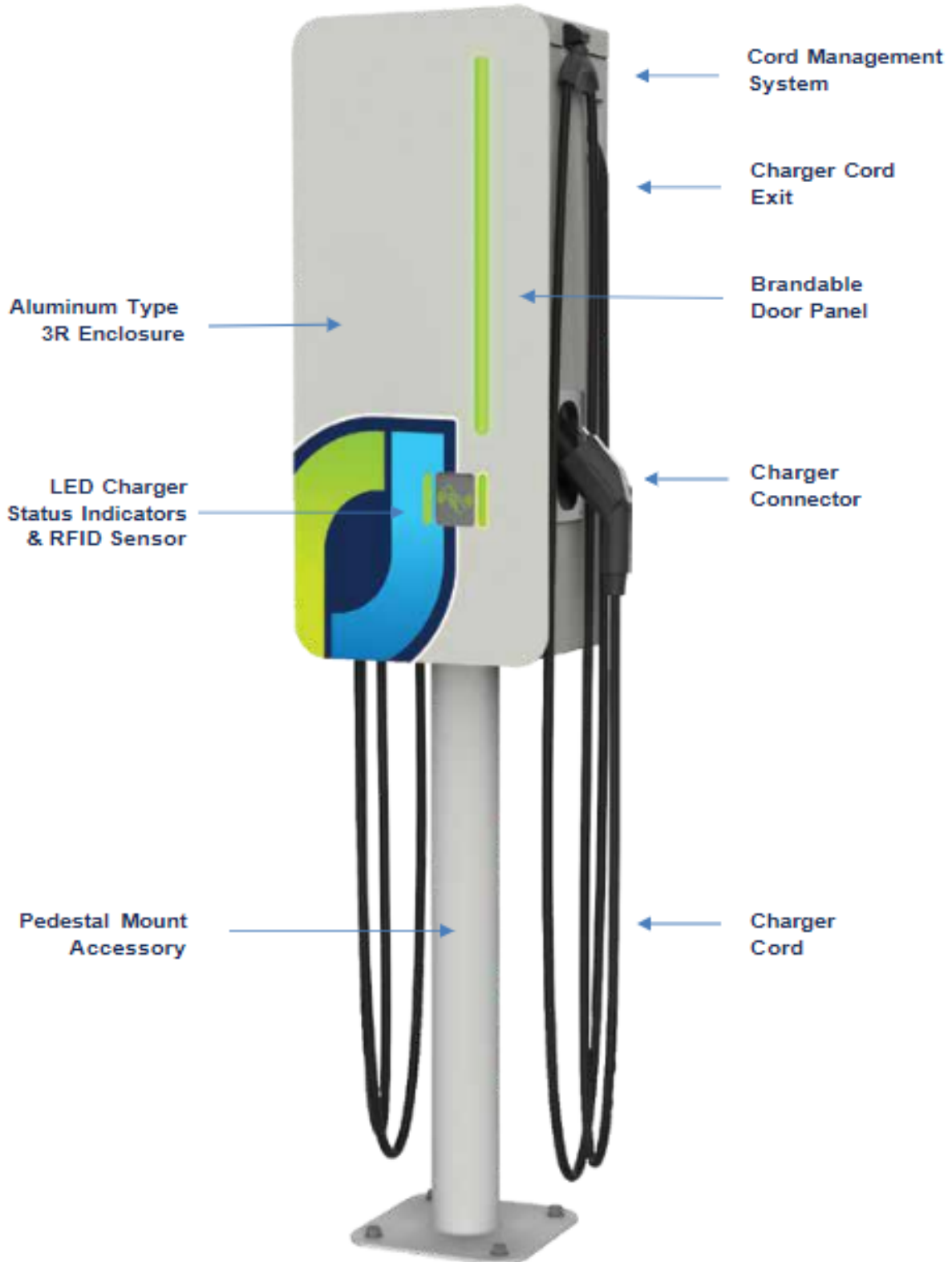


sales@JuiceBarCharger.com



www.JuiceBarCharger.com


Commercial Grade
External
Components



CALL US FOR MORE INFO

 **888-230-2421**

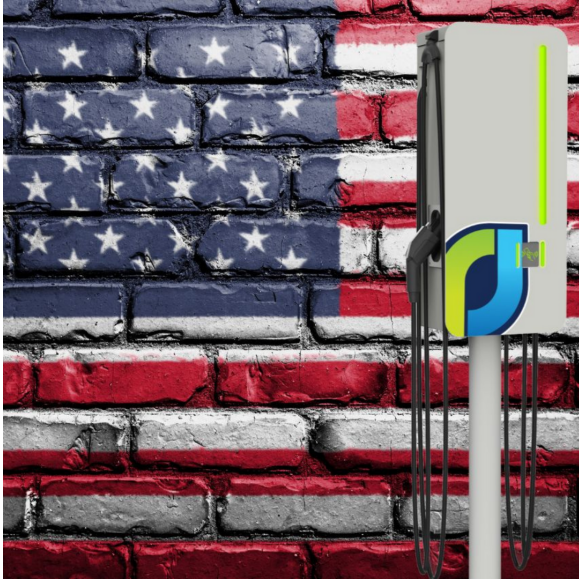
 sales@JuiceBarCharger.com

 www.JuiceBarCharger.com

Made in USA



FIRST CHOICE IN EV CHARGING



- JuiceBar chargers are made and assembled in the USA.
- The co-location of our engineering and production teams in the US allows JuiceBar to closely collaborate, quickly resolve manufacturing questions and spur rapid innovation.
- We can ship EV charging stations within 4 weeks.
- We maintain a 3-month supply of inventory to maintain consistency in our production capability and delivery commitments.
- JuiceBar is increasingly self-manufacturing key components of its Made in America EV charging stations to add even more resilience and responsiveness to its supply chain and production capability.
- JuiceBar's Made in America designation is a requirement for most government contracts as well as many commercial fleet contracts.

Buy America Compliant

Per the Buy American provisions.

- JuiceBar chargers are confirmed to be a "domestic manufactured good"
- JuiceBar unit is currently 70% materials/labor Made in America
- All major components are confirmed and the remaining cost on the BOM can almost fully fall under a waiver for either domestic nonavailability or unreasonable domestic cost
- JuiceBar EV electric vehicle charging stations are a listed UL entity within the United States.



CALL US FOR MORE INFO



888-230-2421



sales@JuiceBarCharger.com



www.JuiceBarCharger.com



Full Overlay

The logo you provide will be a more prominent motif covering the entire faceplate. Our experts will work with you to help your existing design appropriately fit within this larger space.

Existing Logo Overlay

JuiceBar will place a logo you provide at the center of the faceplate for uniformed company awareness or civic heraldry. A light gray or white background will be used with JuiceBar branding in the lower-left corner behind your logo.

Branding your charging station can help your business meet Environmental, Social, and Governance (ESG) goals.

CALL US FOR MORE INFO



888-230-2421



sales@JuiceBarCharger.com



www.JuiceBarCharger.com

Future Proof & Scalable

JuiceBar has an Open Charge Point Protocol (OCPP) approach, which means a customer who chooses JuiceBar hardware can connect the station to any validated network platform for communication between the EV charging station and the validated central station management system.

All chargers installed under incentive programs need to be connected to a management platform and provide specific functionalities.

Our Validated Network Partners



Complete Control Over Your Network

- Operations & Troubleshooting
- Access Rules and Visibility
- User Management
- Payments & Billing
- Smart Energy Management
- Reporting & Analytics

Make Your Charger a SMART Charger

- S** Sync all JuiceBar chargers onto one network regardless of public/private, free or for fee etc.
- M** Monetize usage based on various charging models.
- A** Authorize users to charge their car with seamless driver interface.
- R** Reporting at your fingertips.
- T** Trust your chargers on our network.

CALL US FOR MORE INFO



 sales@JuiceBarCharger.com

 www.JuiceBarCharger.com

ServiceBar

Our network of preferred field service providers are here to help and handle everything from concept, permitting and design, procurement, installation and any post-installation service. We understand that each EV charging install is different, and we account for the multiple variables that are related to the site-specific conditions.

Site Survey

- Proposed location(s)
- Evaluate existing electrical infrastructure
- Load calculations
- Strategy to bring electrical &/or data lines to charger(s)
- Measure cellular reception
- Suggest plans for inadequate reception

Make Ready/ Construction

- Engineering Designs & Drawings
- Permitting
- Trenching
- Running Pipe/Conduit & Wire
- Pouring concrete pad
- Ensuring adequate cell reception, or installing mechanism for communication
- Cell repeaters, amplifiers, or ethernet cables
- Installing lighting, bollards, EV parking space stripe/paint, signage, etc.

Installation/Activation

Install - installing the station (pedestal/body) on your property
Activation - walk through turning station on, test for any faults, do a test charge if possible, ensure settings are correct (pricing/access control/etc.).

Break/Fix

If a component is found to need replacement, we will identify it remotely (benefit of being a SMART network) and if you require assistance replacing the component, we can send a technician to complete the component swap.

CALL US FOR MORE INFO

 **888-230-2421**

 sales@JuiceBarCharger.com

 www.JuiceBarCharger.com